

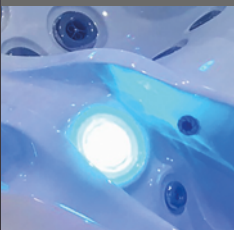
# WHIRLPOOL CANTANIA



GOLD SERIES  
MODEL G1100  
225 X 100 X 78 cm



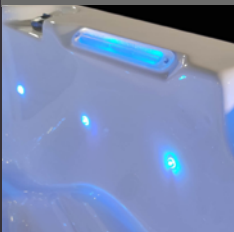
underwater spotlight



ozonator



waterline lighting



Xtreme isolation



**WATERWAVE SPAS®**

[www.waterwave-spas.com](http://www.waterwave-spas.com)

# WHIRLPOOL CANTANIA GOLD SERIES



## TECHNICAL DATA

Dimensions:	225 x 100 x 78 cm
Empty weight:	175 kg
Water capacity:	789 l
Total weight:	964 kg
Cabinet color:	see overview
Shell color:	see overview

## LED LIGHTING

LED underwater spotlight:	included
Waterline:	included

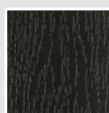
## DETAILS

Seats:	2
Water jets:	33
Isolation:	Xtreme Isolation
Framework:	Stainless steel frame
WPC paneling:	included
Controller:	Balboa
Control panel:	TP600
Water pump:	1 x 3 HP I-level
Circulation pump:	included
Ozonator:	included
Filter:	1 x lamella filter
Water drain:	included
Heating:	3 KW Balboa
Electrical requirements:	3 phases 16 Ampere, 400 Volt

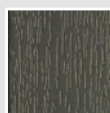
## OPTIONAL

- WiFi Control System
- UV disinfection
- Waterwave Clear Saltsystem
- Preparation of external access (e.g. air/heat pump)

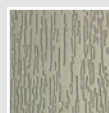
## CABINET COLOR



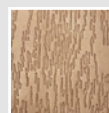
Black



Dark Grey



Light Grey



Dark Brown

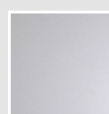
## SHELL COLOR



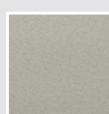
Pure White



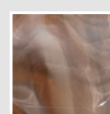
Silver Marble



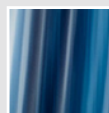
White Pearl



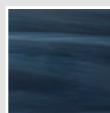
Gypsum



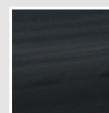
Mediterr. Sunset



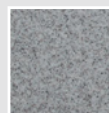
Ocean Wave



Summer Sapphire



Midnight Opal



Sahara