

# WHIRLPOOL IMOLA



GOLD SERIES  
MODEL G4000  
198 X 198 X 90 cm



underwater spotlight



ozonator



foot & neck massage



waterline lighting



Xtreme isolation



high quality jets



**WATERWAVE SPAS®**

[www.waterwave-spas.com](http://www.waterwave-spas.com)

# WHIRLPOOL IMOLA GOLD SERIES



## TECHNICAL DATA

Dimensions:	198 x 198 x 90 cm
Empty weight:	295 kg
Water capacity:	1.270 l
Total weight:	1.565 kg
Cabinet color:	see overview
Shell color:	see overview

## LED LIGHTING

LED underwater spotlight:	included
LED waterline:	included
Waterfall:	included

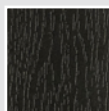
## DETAILS

Seats:	4
Lounges:	1
Water jets:	44
Feet massage:	included
Neck massage:	included
Isolation:	Xtreme Isolation
Framework:	Stainless steel frame
WPC paneling:	included
Controller:	Balboa
Control panel:	TP600
Water pump:	2 x 3 HP I-level
Circulation pump:	included
Ozonator:	included
Filter:	1 x lamella filter
Water drain:	included
Heating:	3 KW Balboa
Electrical requirements:	3 phases 16 Ampere, 400 Volt

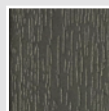
## OPTIONAL

- Airblower including aromatherapy (up to 10 additional air jets)
- Waterwave Sound System
- UV disinfection
- Waterwave Clear Saltsystem
- Preparation of external access (e.g. air/heat pump)

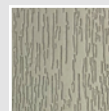
## CABINET COLOR



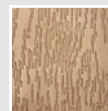
Black



Dark Grey

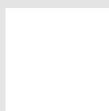


Light Grey



Dark Brown

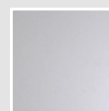
## SHELL COLOR



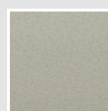
Pure White



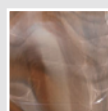
Silver Marble



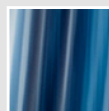
White Pearl



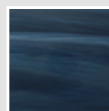
Gypsum



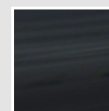
Mediterr. Sunset



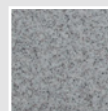
Ocean Wave



Summer Sapphire



Midnight Opal



Sahara