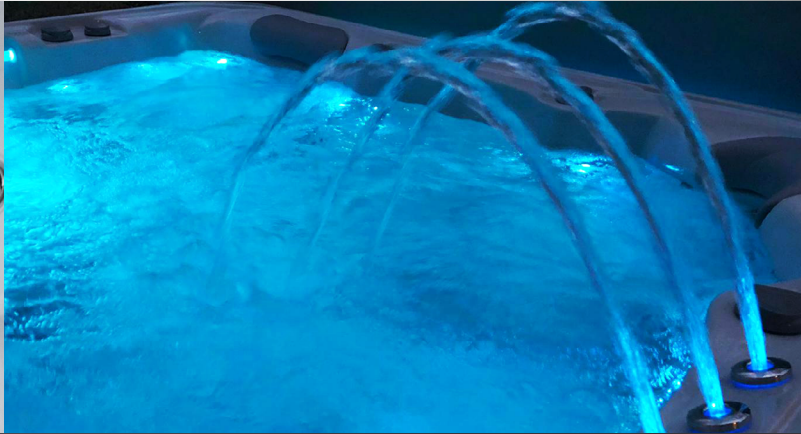


# WHIRLPOOL PORTLAND



GOLD SERIES  
MODEL G3000  
230 X 230 X 92 cm



underwater spotlight



ozonator



foot & neck massage



waterline lighting



Xtreme isolation



high quality jets

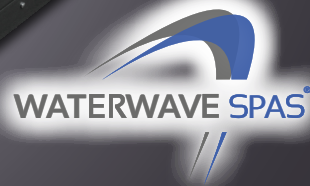


**WATERWAVE SPAS®**

[www.waterwave-spas.com](http://www.waterwave-spas.com)



# WHIRLPOOL PORTLAND GOLD SERIES



## TECHNICAL DATA

Dimensions:	230 x 230 x 92 cm
Empty weight:	380 kg
Water capacity:	1.584 l
Total weight:	1.964 kg
Cabinet color:	see overview
Shell color:	see overview

## LED LIGHTING

LED underwater spotlight:	included
LED waterline:	included
Waterfountains:	included

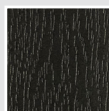
## DETAILS

Seats:	3
Lounges:	2
Water jets:	59
Feet massage:	included
Neck massage:	included
Isolation:	Xtreme Isolation
Framework:	Stainless steel frame
WPC paneling:	included
Controller:	Balboa
Control panel:	TP600
Water pump:	2 x 3 HP I-level
Circulation pump:	included
Ozonator:	included
Filter:	2 x lamella filter
Water drain:	included
Heating:	3 KW Balboa
Electrical requirements:	3 phases 16 Ampere, 400 Volt

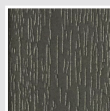
## OPTIONAL

- Airblower including aromatherapy (up to 10 additional air jets)
- Waterwave Sound System
- UV disinfection

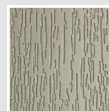
## CABINET COLOR



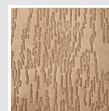
Black



Dark Grey



Light Grey



Dark Brown

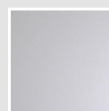
## SHELL COLOR



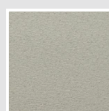
Pure White



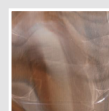
Silver Marble



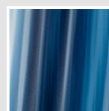
White Pearl



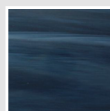
Gypsum



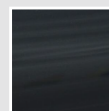
Mediterr. Sunset



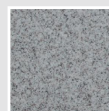
Ocean Wave



Summer Sapphire



Midnight Opal



Sahara