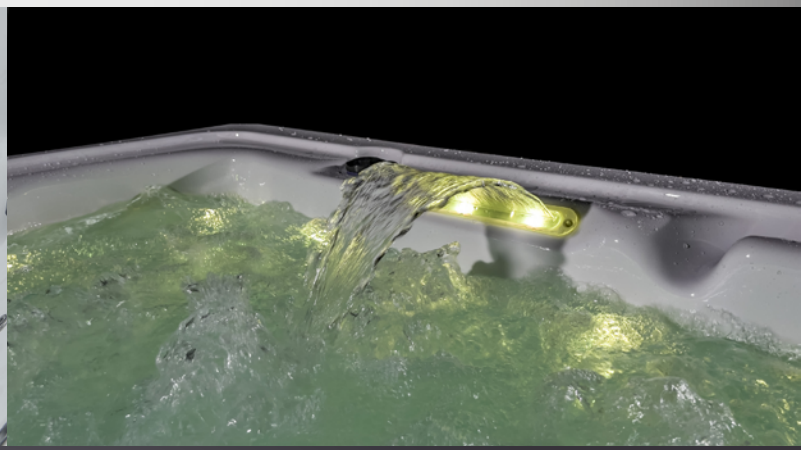
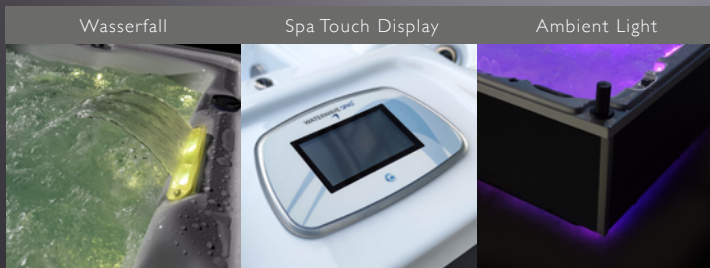


WHIRLPOOL JACKSON



DESIGN SERIES
MODEL WL521
216 X 216 X 92 cm

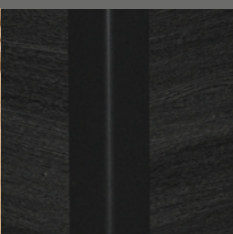
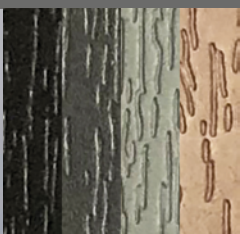
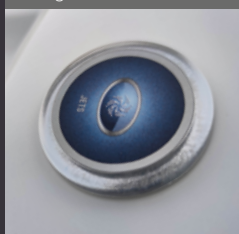


Single Control Button

Standard cabinet

or

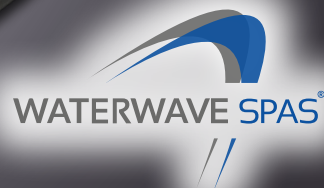
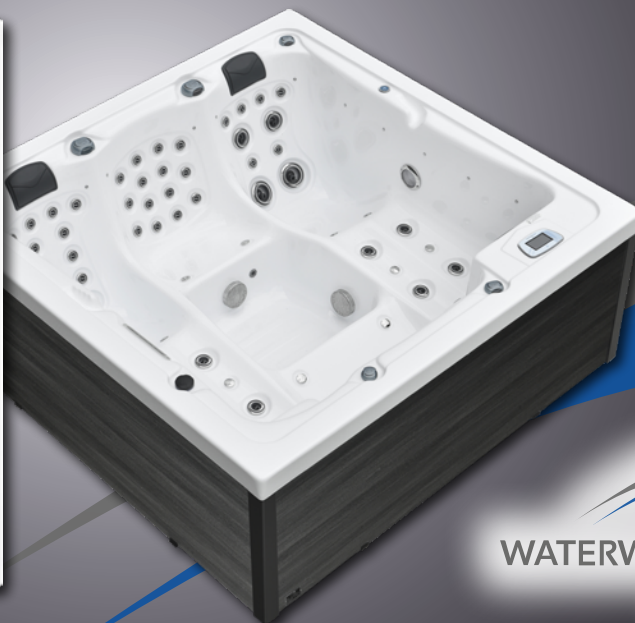
Aluminium cabinet



WATERWAVE SPAS®

www.waterwave-spas.com

WHIRLPOOL JACKSON DESIGN SERIES



TECHNICAL DATA

Dimensions:	216 x 216 x 92 cm
Empty weight:	320 kg
Water capacity:	1.474 l
Total weight:	1.794 kg
Cabinet color:	see overview
Shell color:	see overview
Cabinet:	Aluminium or Standardcabinet

DETAILS

Seats:	3
Lounges:	2
Water jets:	62
Feet massage:	included
Neck massage:	included
Isolation:	Xtreme Isolation
Framework:	Stainless steel frame
Controller:	Balboa
Control panel:	Spatouch
Single Control Button:	optional
Water pump:	2 x 3 HP
Circulation pump:	Silent Wave Eco
Ozonator:	included
UV disinfection:	included
Filter:	2 x lamella filter
Water drain:	included
Heating:	3 KW Balboa
Electrical requirements:	3 phases 16 Ampere, 400 Volt

LED LIGHTING

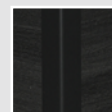
LED ambient light:	optional
LED waterline:	included
LED underwater spotlight:	included
Waterfall:	included
Handle:	included

OPTIONAL

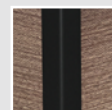
- Airblower including aromatherapy (up to 8 additional air jets)
- Waterwave Design Sound System
- WiFi Control System
- Hydrospeed Massage
- Waterwave Clear Saltsystem
- Preparation of external access (e.g. air/heat pump)

ALUMINIUM CABINET

NEW

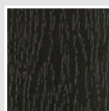


Design Grey

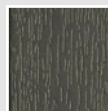


Design Brown

CABINET COLOR STANDARD



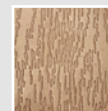
Black



Dark Grey

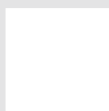


Light Grey



Dark Brown

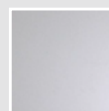
SHELL COLOR



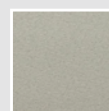
Pure White



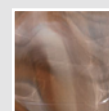
Silver Marble



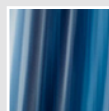
White Pearl



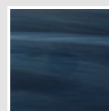
Gypsum



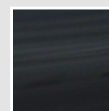
Mediterr. Sunset



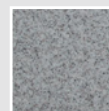
Ocean Wave



Summer Sapphire



Midnight Opal



Sahara