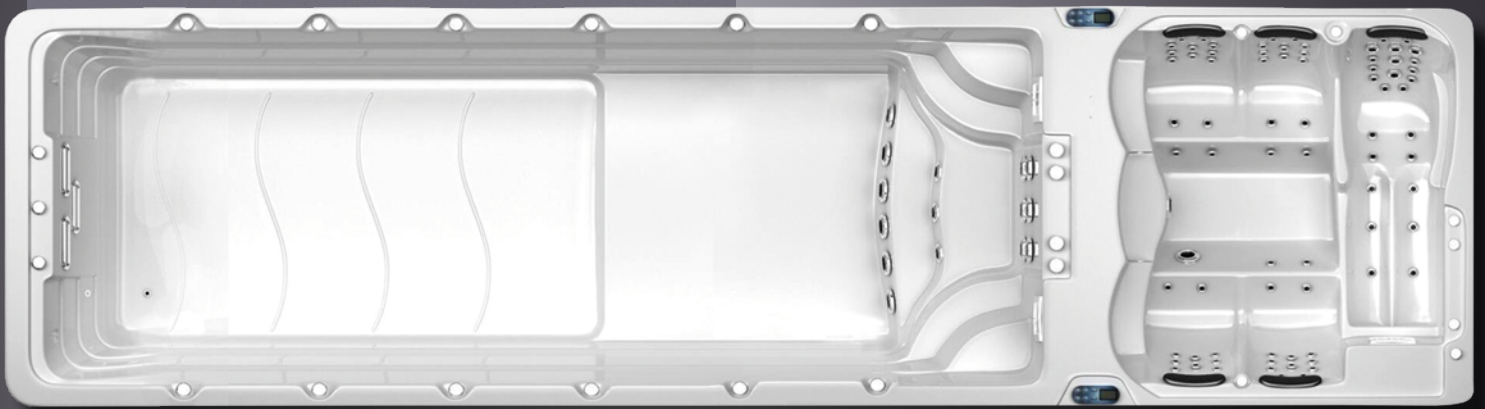


SWIMSPA KILIMANJARO



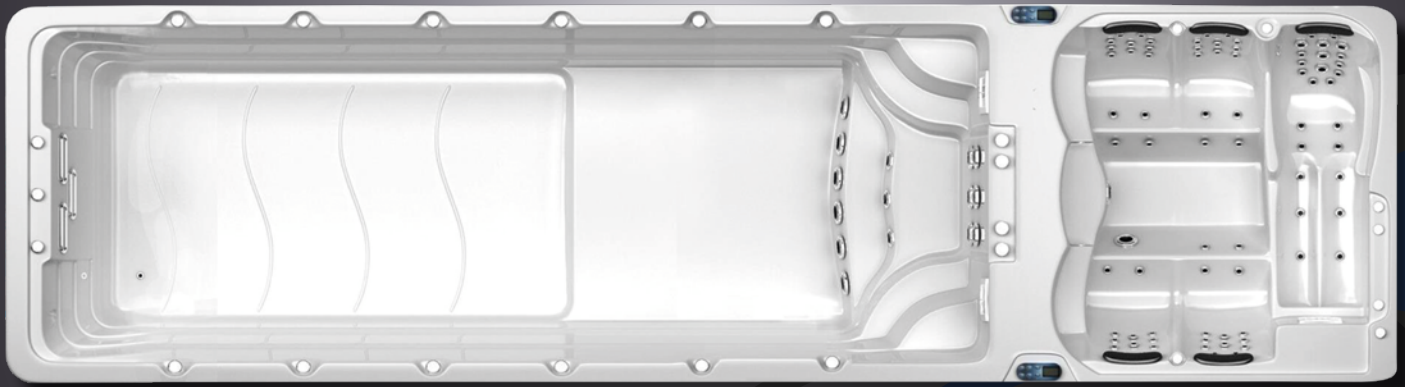
2 ZONE SWIMSPA
MODEL KILIMANJARO
900 X 220 X 150 cm



WATERWAVE SPAS®

www.waterwave-spas.com

SWIMSPA MODEL KILIMANJARO



TECHNICAL SPECIFICATIONS

Dimensions:	900 x 220 x 150 cm
Empty weight:	2.100 kg
Water capacity:	18.500 l
Total weight:	20.600 kg
Cabinet color:	see overview
Shell color:	see overview
Cabinet:	WPC cabinet

COUNTERCURRENT SYSTEM AND PUMPS

Counter-current system:	included (3 River Stream Jets)
Water pump counter current system:	2 x water pump 3 HP (1 stage) 1 x water pump 2 HP (1 stage)
Water pumps in the whirlpool area:	2 x water pump 3 HP (1 stage)
Circulation pump:	2 x included

DETAILS

Seats:	4 (Whirlpool area)
Lounges:	1 (Whirlpool area)
Water jets Whirlpool area:	40
solation:	Xtreme isolation
Framework:	galvanized steel frame
Controller:	2 x Balboa
Air/water regulator:	included
Control panel:	2 x included
Ozonator:	2 x included
UV disinfection:	2 x included
Filter SwimSpa area:	2 x lamella filter
Filter Whirlpool area:	1 x lamella filter
Shut-off valves:	included
Water drain:	included
Heating Whirlpool area:	3 KW
Heating SwimSpa area:	5 KW
Electrical requirements:	2 x 3 phases 20 ampere, 400 volt

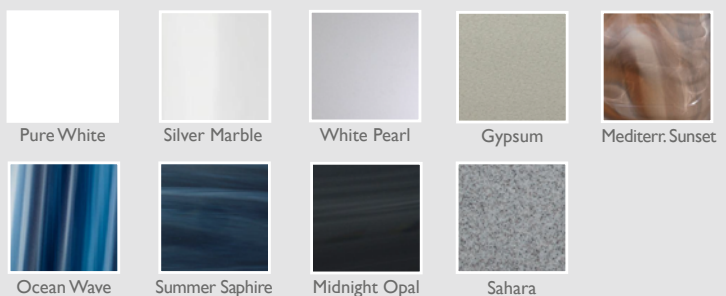
LED LIGHTING

LED waterline lighting:	included
LED underwater spotlight:	included

OPTIONAL

- Tornado counter-current system (frequency-controlled and extra strong)
- Fittnessequipment
- Air source heat pump (see price list – ask your specialist adviser)
- Preparation of external access (e.g. air/heat pump)

SHELL COLOURS



CABINET COLOURS

